

# ROOTED IN THE FUTURE

May 15, 2024

Gloria Erickson and Eliza Meyer  
Dovetail Partners

# Introductions



**Gloria Erickson**  
Fire Adapted  
Communities Project  
Coordinator



**Eliza Meyer**  
Project Director

# About Us

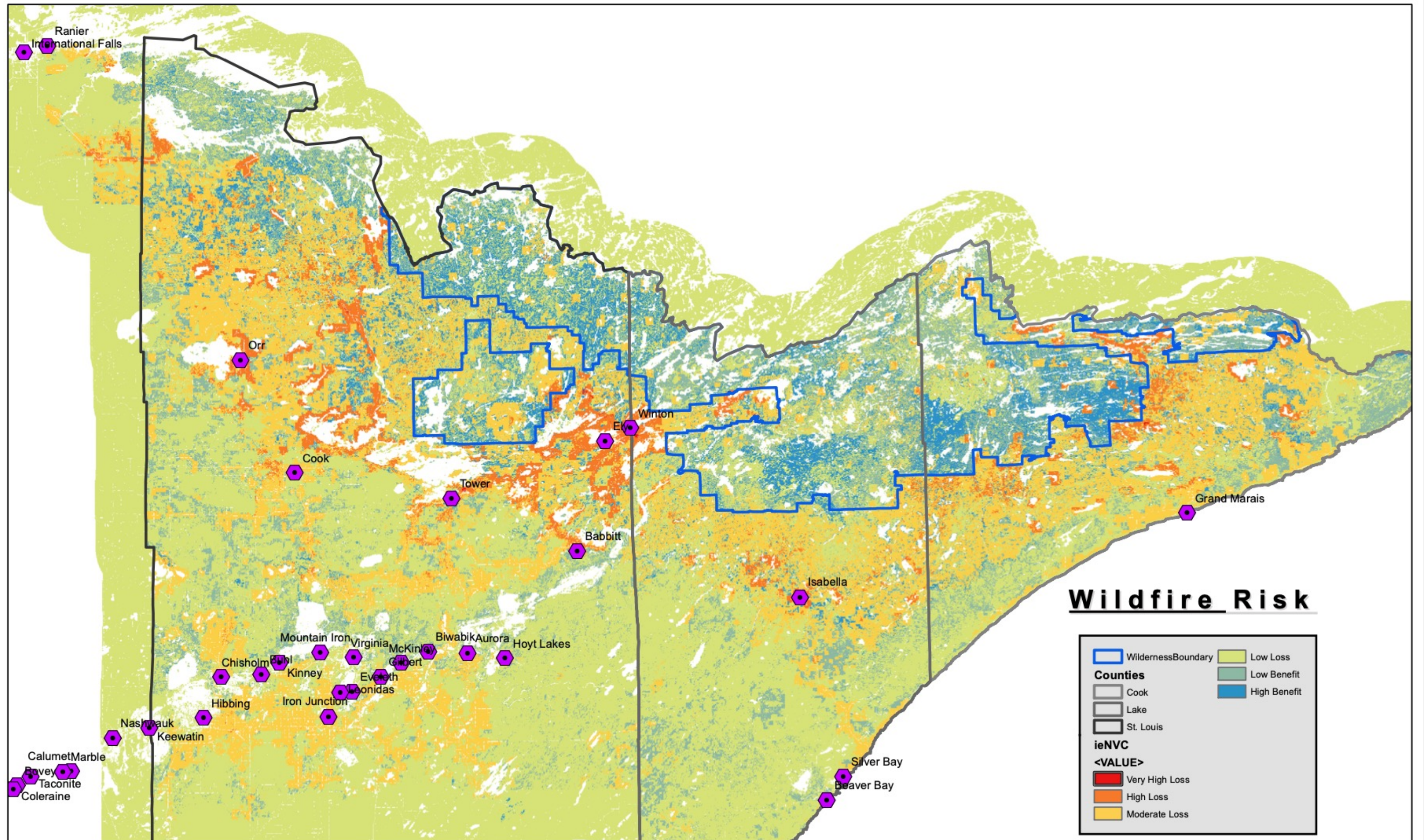


Dovetail is a 501(c)(3) organization that provides authoritative information about the impacts and trade-offs of environmental decisions, including consumption choices, land use, and policy alternatives.



Arrowhead Fire Adapted Communities is a program of Dovetail Partners working to build wildfire resiliency in the communities throughout Minnesota's Arrowhead region. Arrowhead FAC is a member of the national Fire Adapted Communities Learning Network (FAC Net).





# What is a Fire Adapted Community?

**A Choice**

**A Risk**

**A Responsibility**

**A Role**





# What can you do?



**Create a woodland stewardship plan (DNR)**



**Learn and implement Firewise best practices**



**Get involved with community wildfire planning efforts**

# Who can help?

**A variety of resources and professionals are available to help you take care of your land and reduce costs.**

---

## St. Louis County Soil and Water Stewardship Plans:

### **Beth Kleinke, Southern St. Louis County**

beth.kleinke@usda.gov

phone: 218-305-3591 or Cell 218-280-4590

### **Tristan Nelson, Northern St. Louis County**

Tristan@nslswcd.org

phone: 218-288-6144

## **Regional DNR Foresters**

Find yours at <https://www.dnr.state.mn.us/woodlands/cfm-map.html>

### **Zach Evans, Regional Farm Bill Forester**

Zachary.Evans@usda.gov

phone: 218-750-8506

### **Gloria Erickson, Contracted St. Louis County Firewise**

#### **Coordinator**

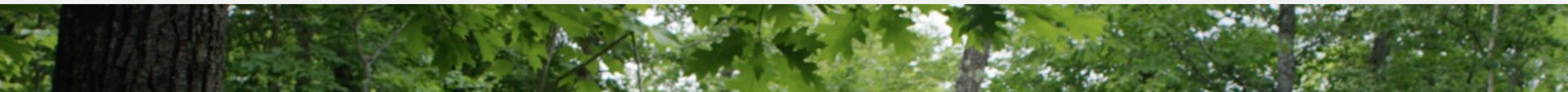
gloria@dovetailinc.org

Phone: 218-365-0878

### **Aaron Molin-Kling, Lake County Firewise Coordinator**

firewise@co.lake.mn.us

Phone: 651-387-1770







**QUESTIONS?**