



# 100 RURAL WOMEN

*Creating Connections and Inspiring Leadership  
with Women in Rural Communities*

## Issue 6 2021

100 in 100

The Breakfast Club  
Webinar Series

The Reading Room  
Monthly Series

Women in the Spotlight





## A Message From Our Founder

We just wrapped up an amazing pilot program for our 100 in 100 program in Northwestern Minnesota. We were thrilled that over 200 women across the region shared their experiences, thoughts, and suggestions during the project through regional surveys and convening. Most importantly, we want to express our deep gratitude for the opportunity to engage and learn how our organization can encourage and support rural women in creating connections and inspiring leadership.

Beginning in June, we will be launching meetings across the State of Minnesota. Registration and meeting information dates will be on the website shortly.

**-TERESA KITTRIDGE**

**CHECK US OUT ON KAXE  
KBXE WEBSITE!**

## **Presentation by Kate Stower**

On Wednesday, June 2nd at 8:30 a.m. CST we will be holding an informational webinar to feature the learnings from the NW Pilot Project. Kate Stower, University of MN Humphrey School graduate research assistant will be taking us through the research and findings along with our supporting partner, Linda Kingery, Executive Director of the NW Regional Sustainable Development Partnership (RSDP). Check out this interview with Kate about the 100 in 100 pilot project.



**INTERVIEW ON  
100 IN 100**

---

## **Breakfast Club Webinar**



Wednesday, June 2nd, 8:30 AM CDT

Join a special webinar 100 Rural Women is hosting to hear about our findings and knowledge we gained from the Pilot of 100 in 100 in Northwest Minnesota.

Check out our other Breakfast Webinars [here!](#)

**REGISTER**

# UPDATES

## Meet Our Newest Board Member



### FAWN SAMPSON

We recently welcomed one new member to serve as a part of our board. Fawn currently works for the University of Minnesota Extension in the Center for Community Vitality as the American Indian Leadership & Civic Engagement Liaison. Read more on our [website](#) about her.

## Help Us Continue On

As an emerging non-profit organization, we need your support to grow, build out our programs, and ensure that we can continue running quality programming to improve the lives of rural women. Will you donate to help us continue to engage and empower rural women?



As part of our effort to lift up women leaders, we are sharing amazing leadership journey profiles of 100 women from across rural Minnesota.

*Let us know if you have someone you think we should highlight by emailing*

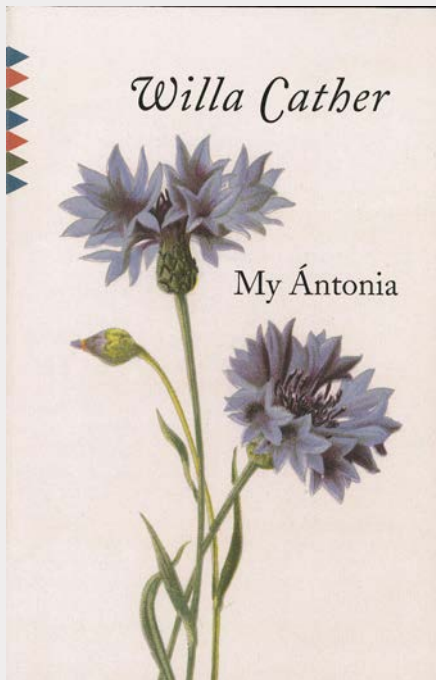
*teresa@100ruralwomen.org*





# JOIN THE READING ROOM

Join us next month for our book club where we will be discussing *My Antonia* by Willa Cather.



**SIGN UP**





100 RURAL WOMEN

**A BIG THANK YOU TO ALL OUR INTERNS &  
GRADUATE STUDENTS!**

**Congratulations to Our  
Graduating Students!**



Kate Stower



Jazlynn Smith



Alexa Jo Schafer



Megan Weilandt



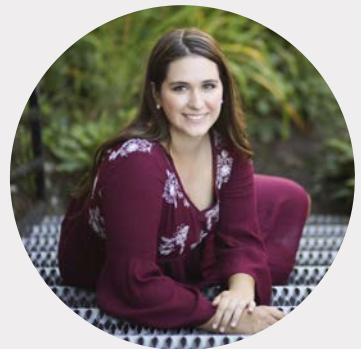
Xandra Okori



Breanna Bahr



Natalie Elle Tyler



Maddie Brule